

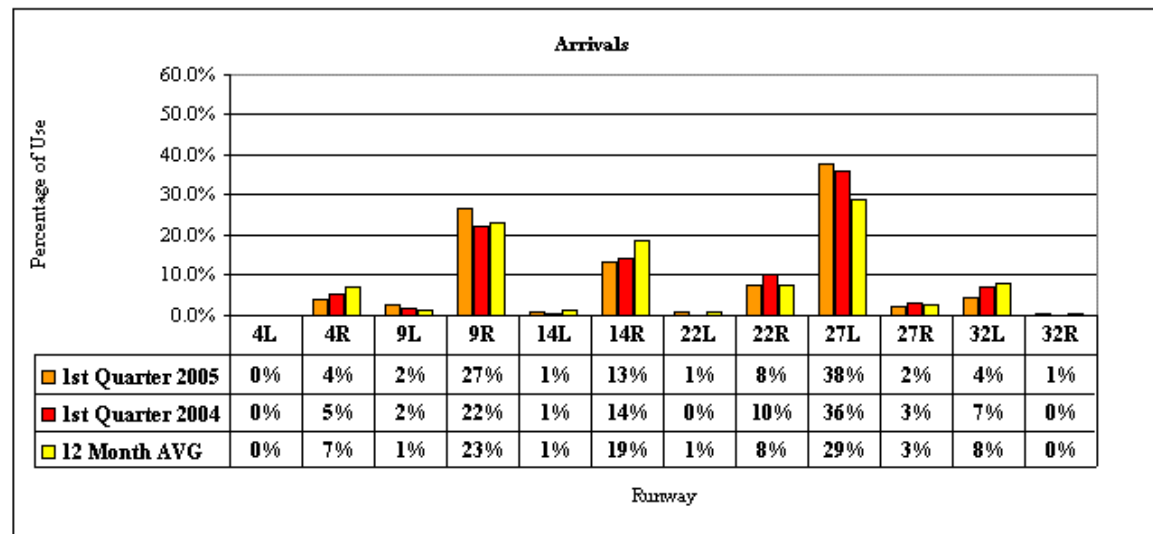
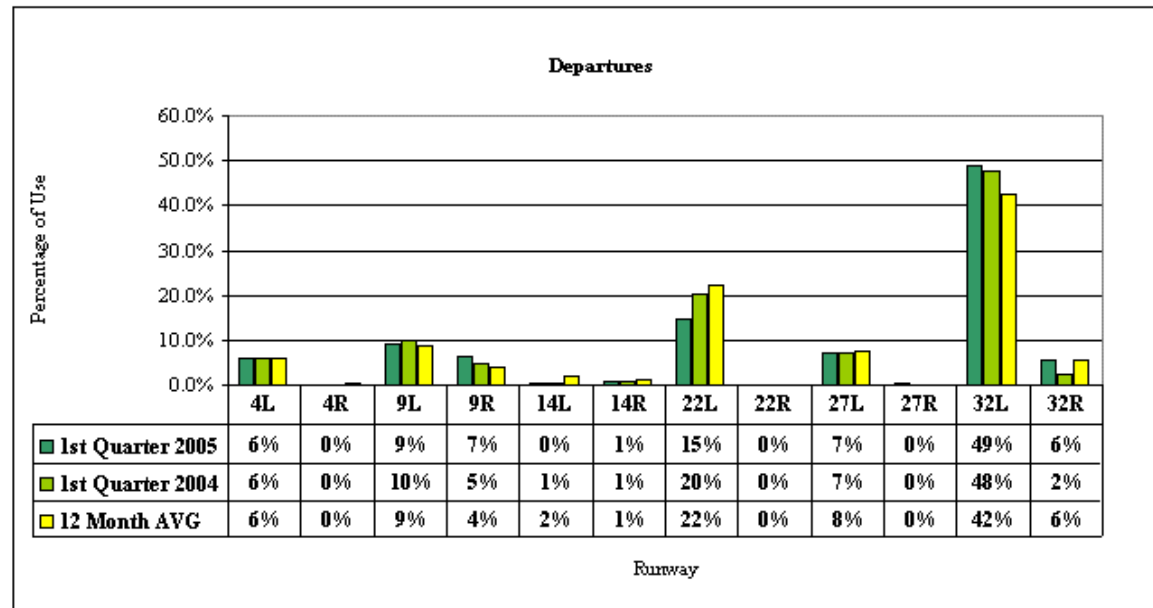
*Fly Quiet Adherence Report  
1st Quarter 2005*

*Chicago O'Hare International Airport*



*City of Chicago Department of Aviation*

*Visit the Community Resource Center on the Internet at  
<http://www.chicagoairports.com>*



Source: Chicago Airport Noise Monitoring System



All Airlines - Run-ups

Location	1st Quarter 2005		1st Quarter 2004		12 Month Avg. <sup>1</sup>	
	Run-ups	Percentage	Run-ups	Percentage	Run-ups	Percentage
GRE	162	78%	100	65%	141	74%
9R Hold Pad	44	21%	51	33%	46	24%
32L Hold Pad	1	0%	3	2%	3	2%
<b>Total</b>	<b>207</b>	<b>100%</b>	<b>154</b>	<b>100%</b>	<b>190</b>	<b>100%</b>

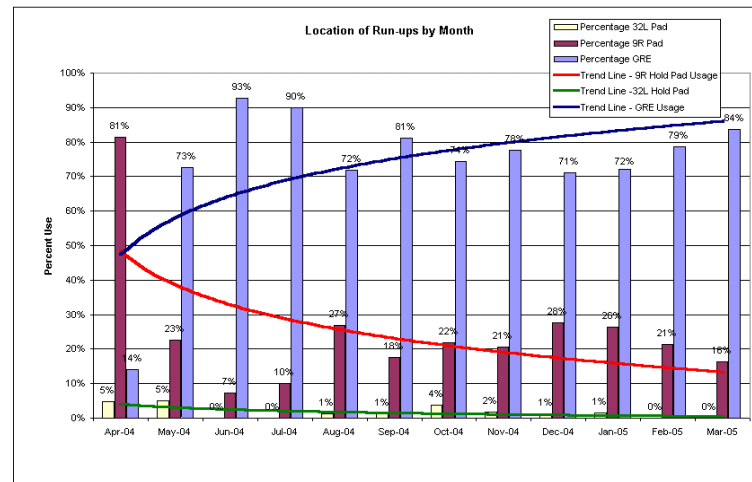
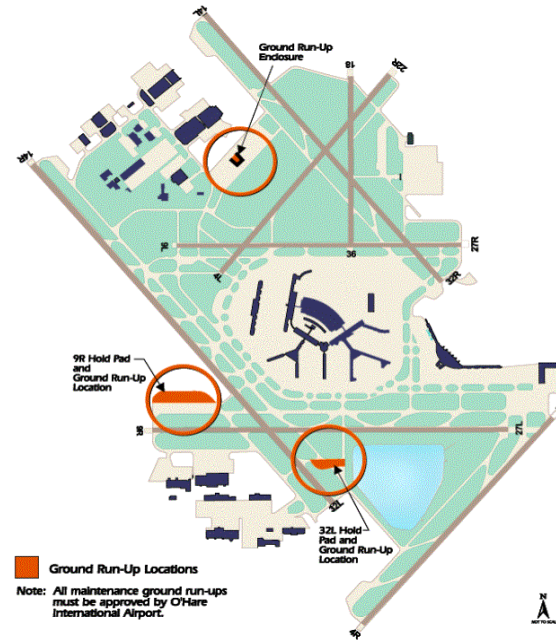
Location	1st Quarter 2005		1st Quarter 2004		12 Month Avg. <sup>1</sup>	
	Run-ups	Percentage	Run-ups	Percentage	Run-ups	Percentage
AA American	64	76%	40	80%	56	78%
9R Hold Pad	20	24%	10	20%	15	21%
32L Hold Pad	0	0%	0	0%	1	1%
<b>Total</b>	<b>84</b>	<b>100%</b>	<b>50</b>	<b>100%</b>	<b>72</b>	<b>100%</b>

Location	1st Quarter 2005		1st Quarter 2004		12 Month Avg. <sup>1</sup>	
	Run-ups	Percentage	Run-ups	Percentage	Run-ups	Percentage
American Eagle	9	100%	19	95%	11	92%
9R Hold Pad	0	0%	1	5%	1	8%
32L Hold Pad	0	0%	0	0%	0	0%
<b>Total</b>	<b>9</b>	<b>100%</b>	<b>20</b>	<b>100%</b>	<b>12</b>	<b>100%</b>

Location	1st Quarter 2005		1st Quarter 2004		12 Month Avg. <sup>1</sup>	
	Run-ups	Percentage	Run-ups	Percentage	Run-ups	Percentage
nwa Northwest Airlines	28	74%	17	40%	30	58%
9R Hold Pad	10	26%	23	55%	21	40%
32L Hold Pad	0	0%	2	5%	1	2%
<b>Total</b>	<b>38</b>	<b>100%</b>	<b>42</b>	<b>100%</b>	<b>52</b>	<b>100%</b>

Location	1st Quarter 2005		1st Quarter 2004		12 Month Avg. <sup>1</sup>	
	Run-ups	Percentage	Run-ups	Percentage	Run-ups	Percentage
UNITED	18	58%	17	55%	20	69%
9R Hold Pad	12	39%	14	45%	8	28%
32L Hold Pad	1	3%	0	0%	1	3%
<b>Total</b>	<b>31</b>	<b>100%</b>	<b>31</b>	<b>100%</b>	<b>29</b>	<b>100%</b>

Location	1st Quarter 2005		1st Quarter 2004		12 Month Avg. <sup>1</sup>	
	Run-ups	Percentage	Run-ups	Percentage	Run-ups	Percentage
Others	43	96%	7	64%	23	88%
9R Hold Pad	2	4%	3	27%	3	12%
32L Hold Pad	0	0%	1	9%	0	0%
<b>Total</b>	<b>45</b>	<b>100%</b>	<b>11</b>	<b>100%</b>	<b>26</b>	<b>100%</b>



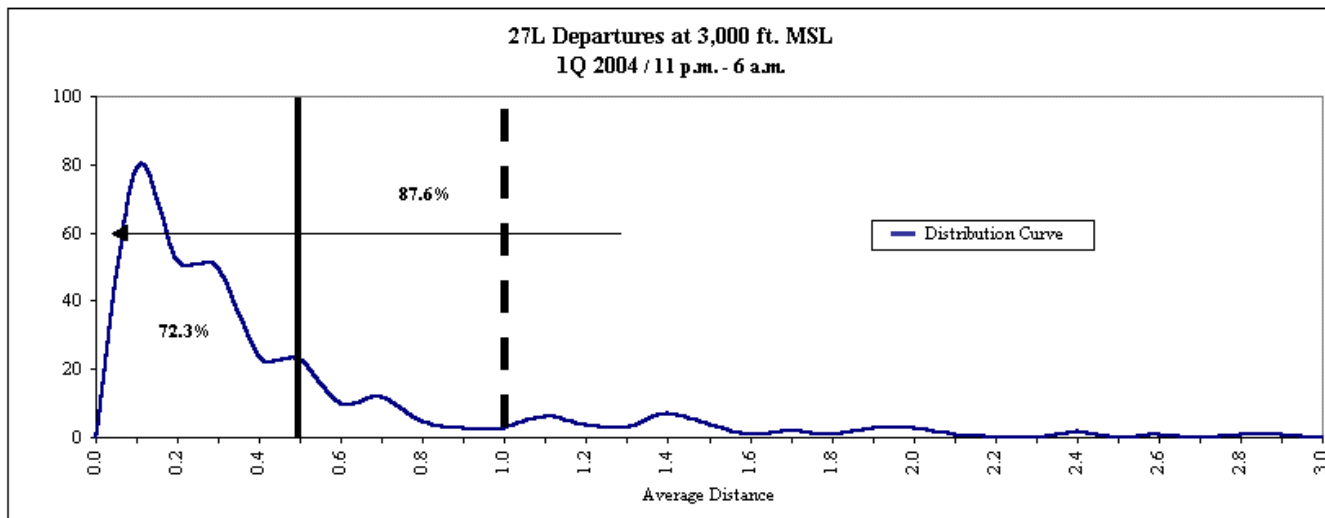
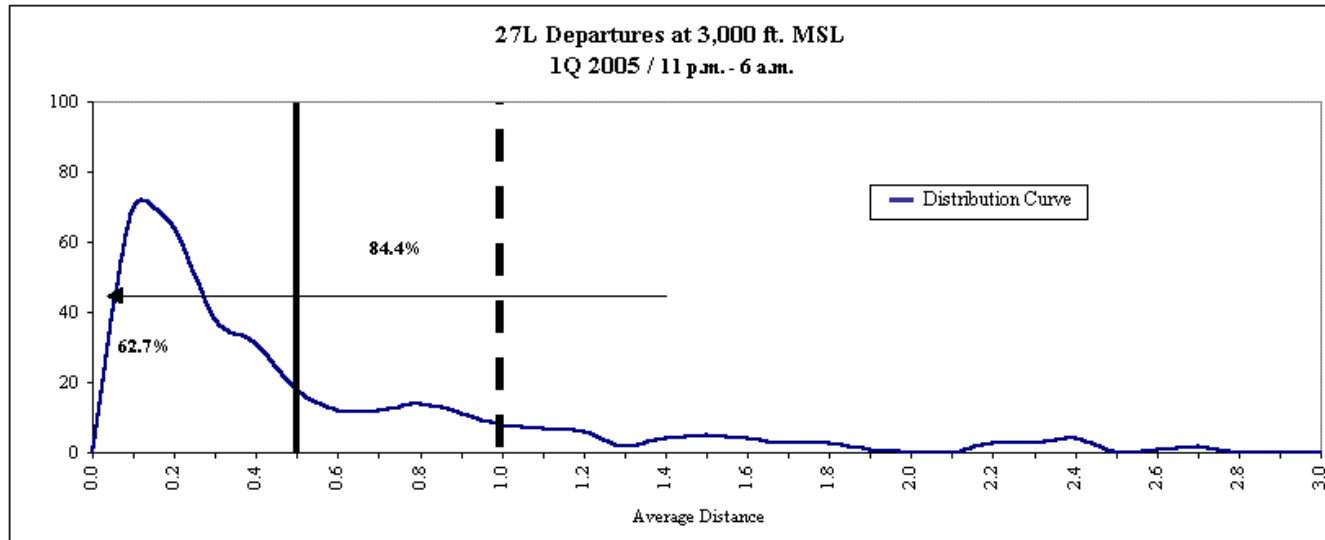
1. 12 Month Average equals the average of 2Q 2005, 3Q 2005, 4Q 2005 and 1Q 2005.

Source: Chicago Department of Aviation, Ground Run-up Logs



Airline	1st Quarter 2005 11 p.m. - 6 a.m.		1st Quarter 2004 11 p.m. - 6 a.m.	
	Departures	Average Distance	Departures	Average Distance
American Airlines	39	0.59	12	0.90
Airborne Express	9	0.38	7	0.19
Air France	5	0.33	7	0.27
Air Jamaica Limited	2	0.13	--	--
Mesa Airlines/United Express	5	0.59	--	--
America West Airlines	3	0.93	1	0.16
Air Wisconsin/United Express	10	1.12	1	2.01
China Airlines	1	1.30	--	--
Air China	1	0.09	4	0.22
Chautauqua/United Express	8	0.58	--	--
China Cargo Airlines	1	0.06	1.00	0.17
Cathay Pacific	1	0.39	6	0.29
Custom Air Transport	1	0.97	--	--
DHL	15	0.45	1	0.32
American Eagle	13	0.71	3	1.36
Eva Air	2	0.31	--	--
Federal Express	24	0.33	20	0.34
USA 3000 Airlines	1	0.58	--	--
Independence Air	2	2.07	--	--
Japan Air Lines	3	0.62	2	0.34
Korean Air	6	0.18	7	0.19
Trans States/United Express	5	0.75	--	--
TACA	19	0.45	--	--
Mexicana	60	0.35	50	0.38
Nippon Cargo Airlines	1	0.11	3	0.41
Northwest Airlines	3	0.38	9	0.40
Polar Air Cargo	6	0.13	17	0.21
Ryan International Airlines	11	0.34	9	0.38
Scandinavian Air System	2	0.37	1	0.21
SkyWest/United Express	8	0.92	--	--
United Airlines	42	0.57	10	0.74
UPS	6	0.96	10	0.72
USAirways	1	0.09	--	--
<b>Overall</b>	<b>316</b>	<b>0.55</b>	<b>181</b>	<b>0.49</b>

# Preferential Flight Track Summary Runway 27L Departures

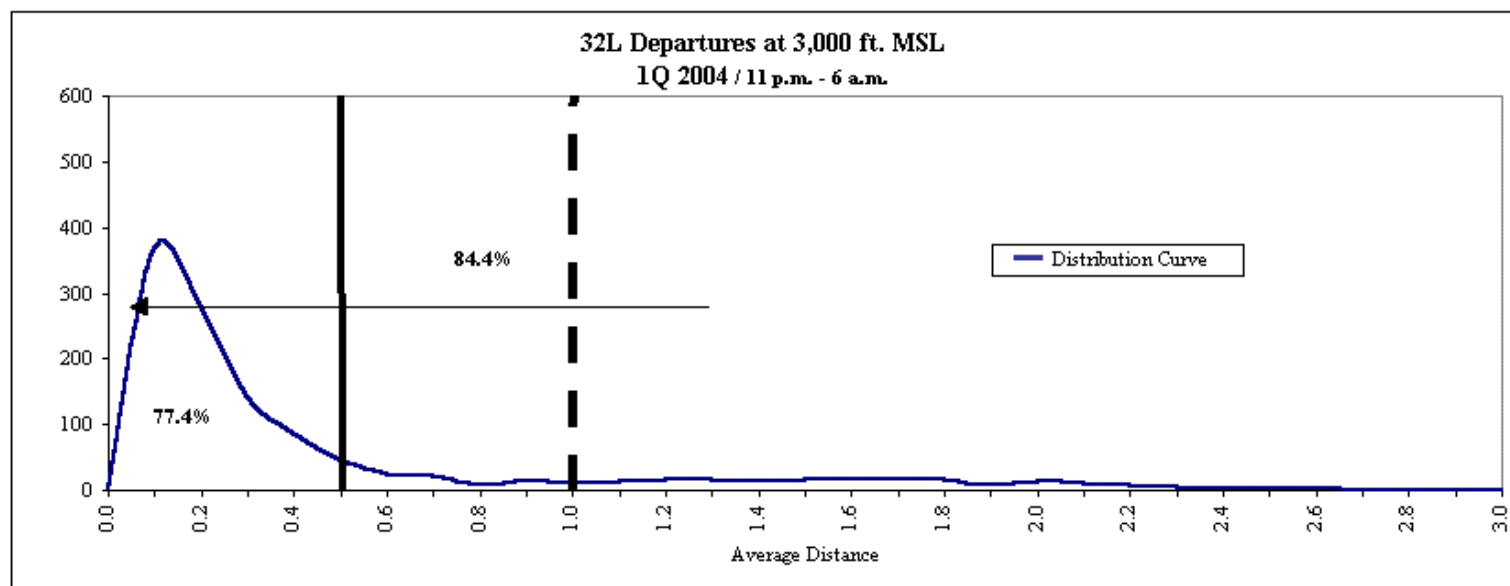
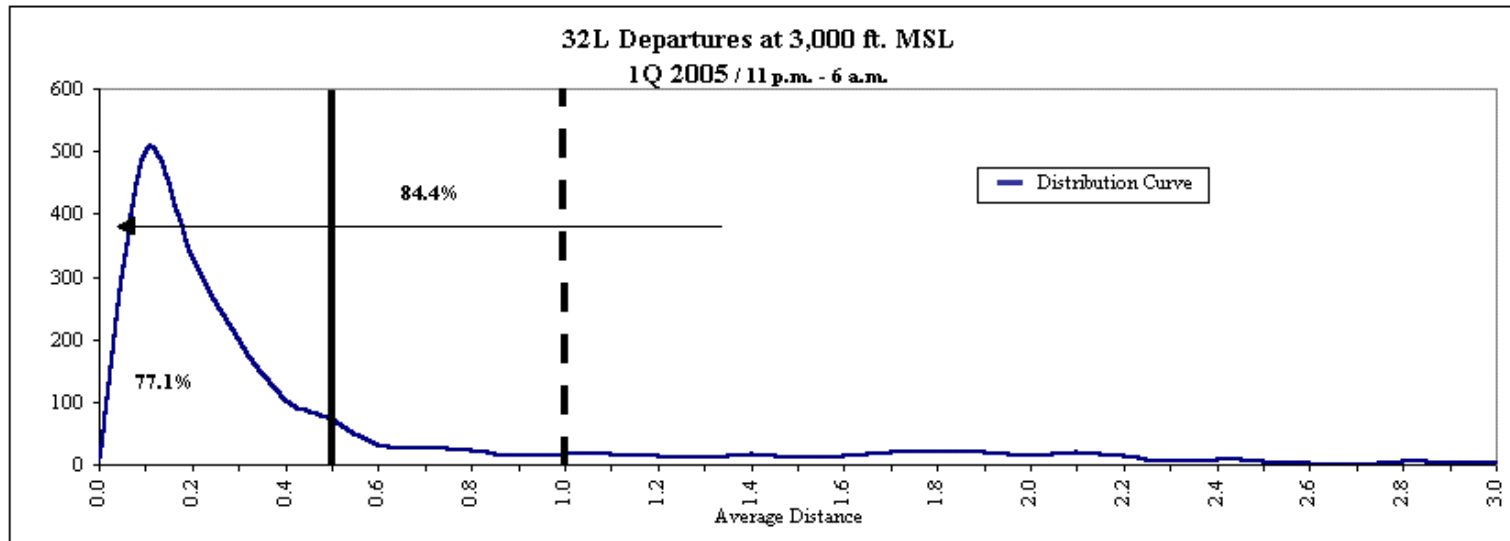


Nighttime Hours 11 p.m. to 6 a.m.: In 1Q 2005, 62.7% of departures were within 1/2 nautical mile and 84.4% were within 1 nautical mile of the preferred flight track.  
In 1Q 2004, 72.3% of departures were within 1/2 nautical mile and 87.6% were within 1 nautical mile of the preferred flight track.

# Preferential Flight Track Summary Runway 32L Departures



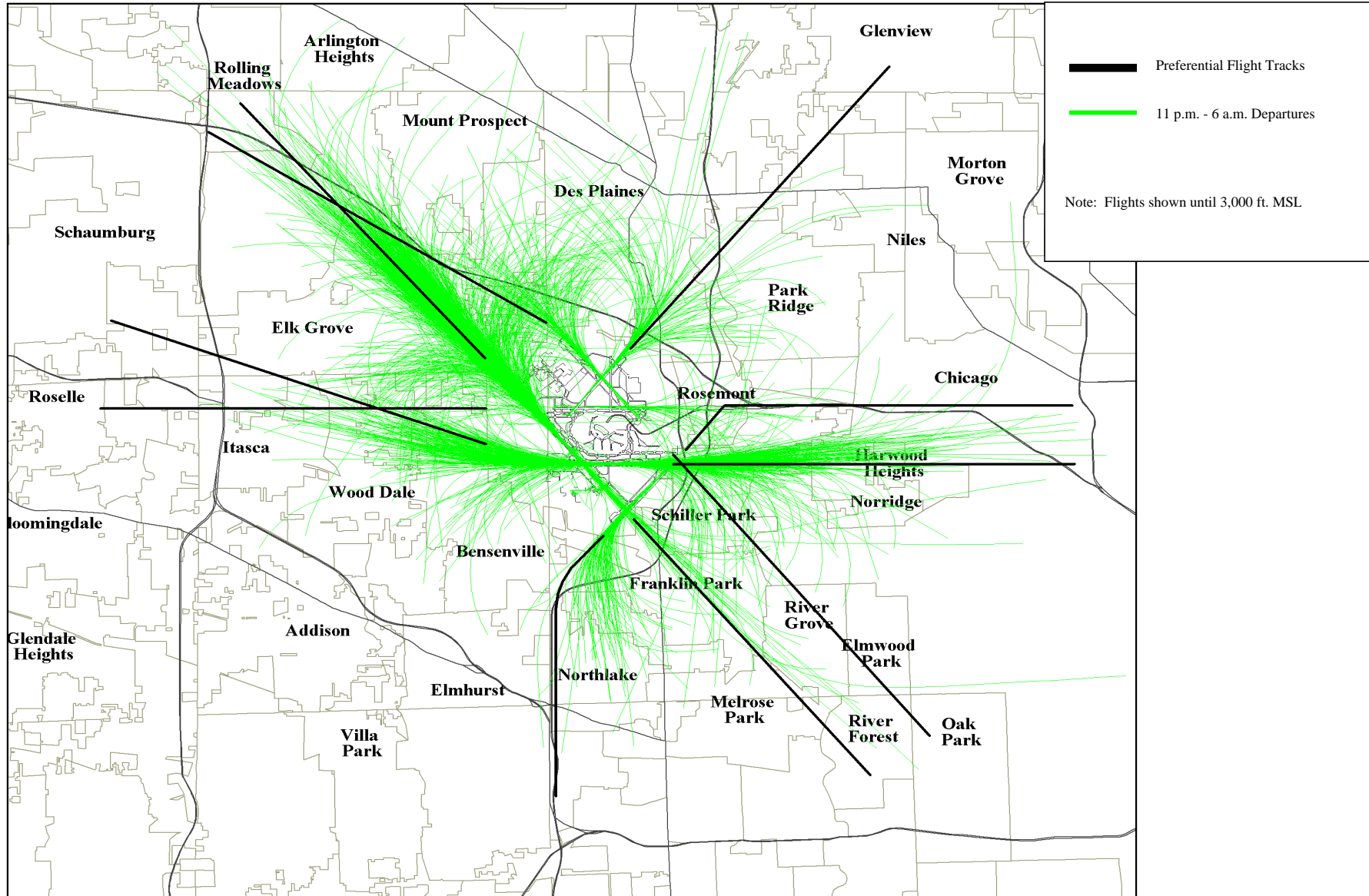
Airline	1st Quarter 2005 11 p.m. - 6 a.m.		1st Quarter 2004 11 p.m. - 6 a.m.	
	Departures	Average Distance	Departures	Average Distance
American Airlines	160	0.54	161	0.81
Asiana Airlines	30	0.22	11	0.18
Airborne Express	43	0.26	43	0.27
Air France	50	0.68	28	0.38
Air Jamaica Limited	2	0.84	--	--
Alaska Airlines	1	0.46	--	--
Mesa Airlines/United Express	14	0.66	5	0.30
America West Airlines	7	0.44	6	0.46
Air Wisconsin/United Express	61	0.87	63	0.51
China Airlines	9	0.24	6	0.07
Air China	14	0.17	16	0.24
Chautauqua/United Express	34	0.64	2	--
China Cargo Airlines	8	0.15	--	--
Continental Airlines	12	0.24	3	0.25
Cathay Pacific	35	0.52	24	0.32
Custom Air Transport	30	0.49	9	0.42
Delta	4	1.61	--	--
DHL	32	0.23	26	0.26
Lufthansa German Airlines	22	0.28	16	0.20
American Eagle	53	0.64	34	1.06
Eva Air	18	0.12	--	1.06
Federal Express	231	0.38	160	0.33
USA 3000 Airlines	1	1.70	--	--
Independence Air	35	0.18	--	--
Japan Air Lines	33	0.21	19	0.14
Korean Air	42	0.12	32	0.17
Trans States/United Express	41	0.98	3	0.82
TACA	12	0.50	--	--
Mexicana	48	0.26	39	0.16
Nippon Cargo Airlines	22	0.20	22	0.16
Spirit Airlines	1	0.29	30	0.37
Northwest Airlines	65	0.19	39	0.19
Polar Air Cargo	49	0.15	43	0.16
Ryan International Airlines	21	0.19	33	0.19
Scandinavian Air System	5	0.54	4	0.13
SkyWest/United Express	28	0.99	--	--
United Airlines	178	0.84	113	0.74
UPS	28	0.27	54	0.21
USAirways	20	0.30	--	--
<b>Overall</b>	<b>1499</b>	<b>0.48</b>	<b>1044</b>	<b>0.36</b>



Fly Quiet Mode Hours: In 1Q 2005, 77.1% of departures were within 1/2 nautical mile and 84.4% were within 1 nautical mile of the preferred flight track.  
In 1Q 2004, 77.4% of departures were within 1/2 nautical mile and 84.4% were within 1 nautical mile of the preferred flight track.

Chicago O'Hare International Airport  
Period: 1st Quarter 2005

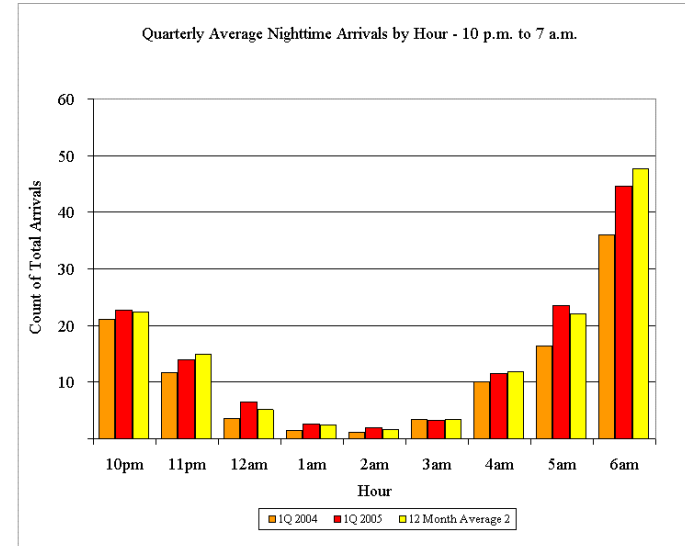
Nighttime Preferential Flight Track Compliance (11 p.m. - 6 a.m.)





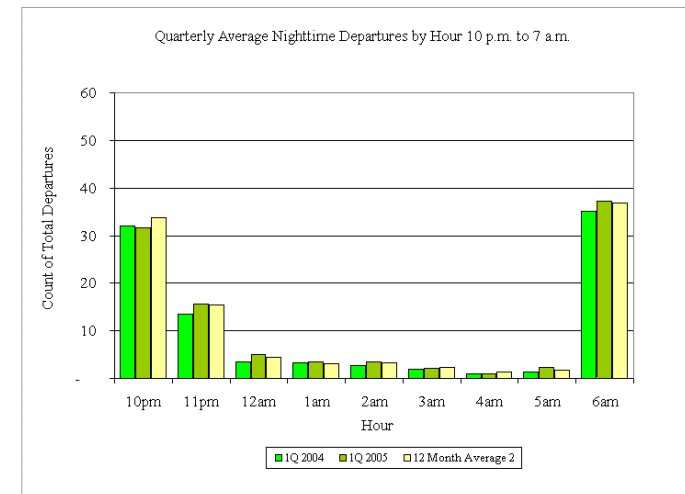
## Arrivals

Quarterly Average Nighttime Arrivals by Hour - 10 p.m. to 7 a.m.											
Quarter	10pm	11pm	12am	1am	2am	3am	4am	5am	6am	Total *	Stage 3 Jets
1Q 2004	21	12	4	1	1	3	10	16	36	105	100%
2Q 2004	23	17	5	2	1	3	11	20	46	129	100%
3Q 2004	22	15	5	3	2	3	13	23	53	139	100%
4Q 2004	22	13	5	2	2	3	12	22	47	128	100%
1Q 2005	23	14	7	3	2	3	12	24	45	131	100%
12 Month Average <sup>2</sup>	22	15	5	3	2	3	12	22	48	132	100%



## Departures

Quarterly Average Nighttime Departures by Hour - 10 p.m. to 7 a.m.											
Quarter	10pm	11pm	12am	1am	2am	3am	4am	5am	6am	Total *	Stage 3 Jets
1Q 2004	32	14	3	3	3	2	1	1	35	94	100%
2Q 2004	37	17	5	3	3	2	1	1	36	106	100%
3Q 2004	35	16	4	2	3	3	2	1	39	105	100%
4Q 2004	31	13	3	3	4	2	1	2	35	95	100%
1Q 2005	32	16	5	3	3	2	1	2	37	102	100%
12 Month Average <sup>2</sup>	34	15	4	3	3	2	1	2	37	102	100%



1. Data Represents Total Operations Per Quarter as measured by Airport Noise Monitoring System

2. 12 Month Average equals the average of 2Q 2004, 3Q 2004, 4Q 2004 and 1Q 2005.

\* Total may not add due to rounding.

Source: Chicago Airport Noise Monitoring System

**Chicago O'Hare International Airport**  
**Period: 1st Quarter 2005**

**Quarterly Nighttime Noise Complaints (10 p.m. to 7 a.m.)**



Community	# of Complaints			Percentage of Complaints			# of Callers			Percentage of Callers		
	1st Quarter 2005	1st Quarter 2004	12 Month Avg. <sup>2</sup>	1st Quarter 2005	1st Quarter 2004	12 Month Avg. <sup>2</sup>	1st Quarter 2005	1st Quarter 2004	12 Month Avg. <sup>2</sup>	1st Quarter 2005	1st Quarter 2004	12 Month Avg. <sup>2</sup>
Arlington Heights	2	3	3	2%	1%	1%	2	3	3	3%	3%	3%
Bensenville	3	4	6	2%	1%	2%	3	3	4	5%	3%	3%
Bloomington	0	0	0	0%	0%	0%	0	0	0	0%	0%	0%
Carol Stream	0	0	0	0%	0%	0%	0	0	0	0%	0%	0%
Chicago	15	18	33	12%	4%	11%	8	13	13	13%	14%	13%
Des Plaines	33	17	39	27%	6%	13%	13	6	12	21%	7%	12%
Downers Grove	0	2	2	0%	0%	1%	0	2	1	0%	2%	1%
Elk Grove Village	4	18	12	3%	1%	4%	2	9	7	3%	10%	7%
Elmhurst	1	0	15	1%	0%	5%	1	0	4	2%	0%	3%
Elmwood Park	0	22	6	0%	0%	2%	0	1	4	0%	1%	4%
Franklin Park	3	8	14	2%	1%	5%	3	7	3	5%	8%	3%
Gary, IN	0	0	4	0%	0%	1%	0	0	0	0%	0%	0%
Glenview	0	0	12	0%	0%	4%	0	0	2	0%	0%	2%
Harwood Heights	18	56	52	15%	3%	17%	6	10	8	10%	11%	8%
Hillside	4	7	9	3%	1%	3%	2	2	2	3%	2%	1%
Hinsdale	0	0	0	0%	0%	0%	0	0	0	0%	0%	0%
Hoffman Estates	0	0	0	0%	0%	0%	0	0	0	0%	0%	0%
Inverness	0	0	1	0%	0%	0%	0	0	1	0%	0%	1%
Itasca	0	2	1	0%	0%	0%	0	2	1	0%	2%	1%
Lake Zurich	0	1	1	0%	0%	0%	0	1	1	0%	1%	0%
Lombard	0	0	2	0%	0%	1%	0	0	0	0%	0%	0%
Medinah	0	1	3	0%	0%	1%	0	1	1	0%	1%	1%
Melrose Park	4	15	13	3%	1%	4%	2	5	3	3%	5%	3%
Mount Prospect	2	0	3	2%	1%	1%	2	0	2	3%	0%	1%
Niles	1	2	3	1%	0%	1%	1	2	2	2%	2%	2%
Norridge	3	5	7	2%	0%	2%	1	4	3	2%	4%	3%
Northlake	1	0	2	1%	0%	1%	1	0	1	2%	0%	1%
Oak Park	0	0	2	0%	0%	0%	0	0	1	0%	0%	0%
Palatine	0	3	7	0%	0%	2%	0	3	5	0%	3%	5%
Park Ridge	3	3	14	2%	1%	5%	2	3	7	3%	3%	7%
River Forest	0	0	1	0%	0%	0%	0	0	1	0%	0%	0%
River Grove	0	0	3	0%	0%	1%	0	0	1	0%	0%	0%
Rolling Meadows	3	5	6	2%	0%	2%	1	2	1	2%	2%	1%
Roselle	1	0	3	1%	0%	1%	1	0	1	2%	0%	1%
Rosemont	0	0	0	0%	0%	0%	0	0	0	0%	0%	0%
Schaumburg	0	0	1	0%	0%	0%	0	0	0	0%	0%	0%
Schiller Park	0	1	2	0%	0%	0%	0	1	1	0%	1%	1%
Wood Dale	6	6	13	5%	1%	4%	3	6	6	5%	7%	6%
Other 1	16	9	12	13%	4%	4%	8	6	5	13%	7%	5%
<b>Total</b>	<b>123</b>	<b>208</b>	<b>301</b>	<b>100%</b>	<b>100%</b>	<b>30%</b>	<b>62</b>	<b>92</b>	<b>103</b>	<b>100%</b>	<b>100%</b>	<b>100%</b>

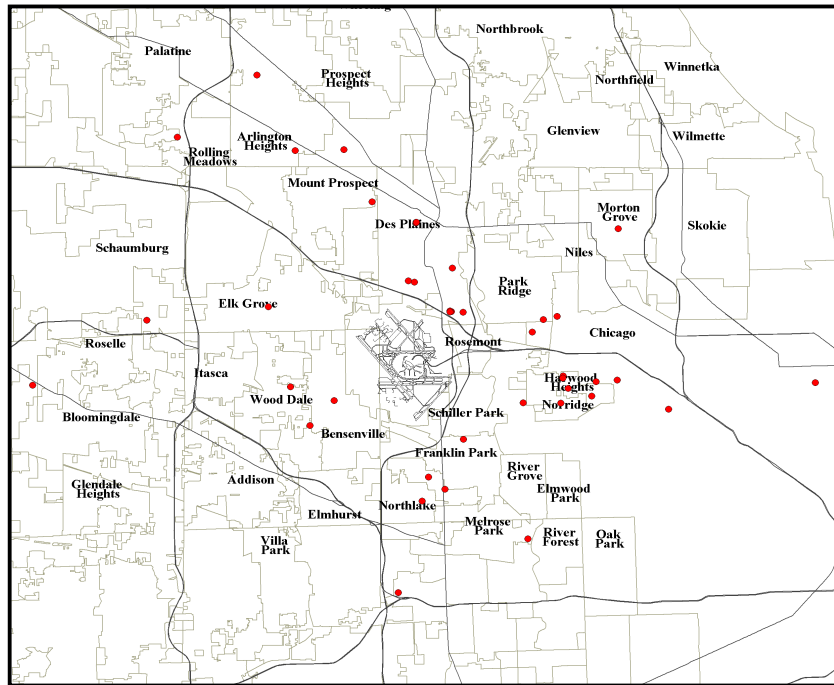
1. Other: Barrington, Bartlett, Itasca, Morton Grove, St. Charles, Stone Park.  
2. 12 Month Average equals average of 2Q 2004, 3Q 2004, 4Q 2004 and 1Q 2005.  
Source: Chicago Airport Noise Monitoring System



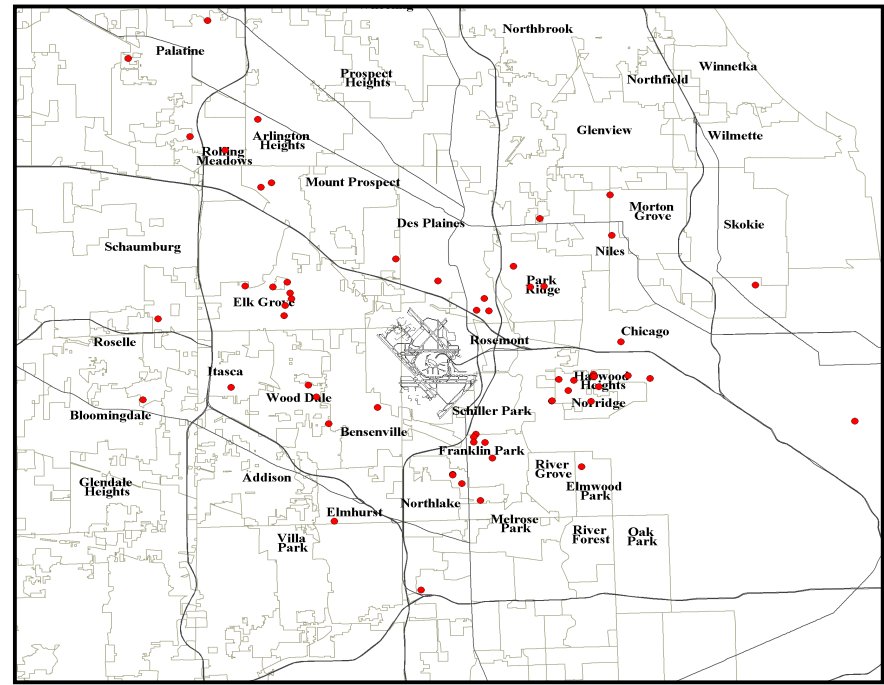
**Legend**

● Location of Nighttime Noise Complaints

1st Quarter 2005 Nighttime Complaint Locations:



1st Quarter 2004 Nighttime Complaint Locations:



Note: Not all callers are located due to lack of address information or are located outside the extent of the map.



Noise Monitor	Community	<u>1st Quarter 2005</u>		<u>1st Quarter 2004</u>		<u>12 Month Average</u>	
		<u>Aircraft Leq<sup>1</sup></u>	<u>Community Leq<sup>1</sup></u>	<u>Aircraft Leq<sup>1</sup></u>	<u>Community Leq<sup>1</sup></u>	<u>Aircraft Leq<sup>1</sup></u>	<u>Community Leq<sup>1</sup></u>
1	Arlington Heights	53.0	55.2	52.0	55.1	53.4	55.3
2	Melrose Park	45.2	55.2	47.4	54.1	47.5	55.4
3	Bensenville	52.1	57.8	51.9	58.0	53.1	58.5
4	Schiller Park	50.3	56.3	48.7	56.4	50.3	56.9
5	Chicago	48.2	53.4	46.4	53.1	48.8	55.1
6	Chicago	47.0	51.4	45.8	51.1	47.4	52.3
7	Des Plaines	51.8	55.9	47.7	54.3	50.8	55.0
8	Des Plaines	54.1	57.7	51.2	56.5	54.4	57.4
9	Des Plaines	57.3	60.9	53.7	58.9	57.6	60.3
10	Rolling Meadows	50.9	54.9	50.6	55.2	52.4	55.7
11	Chicago	48.8	53.8	48.3	53.2	49.9	55.3
12	Elk Grove	51.1	52.7	53.0	60.0	49.6	57.1
13	Elk Grove	66.3	67.6	65.0	67.0	66.6	66.5
14	Elk Grove	56.7	58.1	55.2	57.0	56.8	57.4
15	Franklin Park	49.9	55.5	50.4	55.6	51.2	56.2
16	Franklin Park	60.4	67.0	59.0	67.0	61.4	67.1
17	Harwood Heights	58.9	60.1	57.7	59.5	58.1	59.4
19	Stone Park	50.4	56.8	49.5	56.7	50.8	57.2
20	Mount Prospect	52.9	54.6	51.9	54.4	53.0	54.9
21	Mount Prospect	48.3	51.1	45.8	50.0	48.0	50.6
22	Norridge	61.0	61.8	60.0	61.2	59.9	61.2
23	Northlake	54.8	58.3	54.3	58.6	56.2	58.6
24	Park Ridge	47.3	51.3	44.6	51.3	47.5	51.5
25	Park Ridge	48.9	54.0	47.7	53.8	49.8	54.5
26	Park Ridge	47.7	51.2	45.0	50.2	48.1	51.6
27	Rosemont	56.5	61.6	54.5	60.9	56.3	61.8
28	Schiller Park	71.3	72.1	71.4	72.3	70.6	70.6
32	Wood Dale	57.5	61.7	58.4	63.6	56.2	60.1
34	Elk Grove	47.7	51.5	48.8	52.4	48.8	52.1
35	Unincorp. Cook	56.0	61.3	51.7	56.1	53.8	58.4
37	Mount Prospect	45.0	50.4	44.0	49.6	46.0	51.1

1. Leq (Equivalent Sound Level): The average sound energy level during a stated period of time.

Red represents an increase of 1 dB or more from same quarter previous year (17 monitors). Green represents a decrease of 1 dB or more from same quarter previous year (4 monitors).

Source: Chicago Airport Noise Monitoring System